



NHS

South Central
Ambulance Service
NHS Foundation Trust

111/IUC Performance Report

Presented by
Mark Rowell
Head of IUC & NHS111 Service

11/01/2021





NHS

South Central
Ambulance Service
NHS Foundation Trust

NHS111 in Context

- SCAS is part of the Covid-19 Pandemic Response
- Mobilised the National Clinical Assessment Service (NCAS)
- Working with the national teams to set up specialists, such as GPs, pharmacists and dentist for the NCAS
- Supporting the Covid-19 Response Service (CRS)
- Provided a Safety Netting Service using the NHS 111 in SCAS
 - 9 March 20 to 9 June 20
 - Supporting calls from the CRS with Health and Clinical Advisors
 - Demand significantly above the contracted levels
 - Early involvement of track and trace
 - Sign posting patients to hot hubs



NHS

South Central
Ambulance Service
NHS Foundation Trust

NHS111 Performance

- Since July SCAS operating as normal with 111 business
- Demand profile changed from the out of hours period into the in hours (08.00 to 18.30)
- We have seen a 30% increase in demand, during the in hours period
- Increase in staff absence due to the pandemic
- We also had further demand pressures due to the coronavirus and other related issues:
 - Increase in demand when the schools returned
 - Changes in government policy relating to coronavirus
 - Primary care pressures
 - Number of changes to the clinical triage and operating platforms in 111



NHS

South Central
Ambulance Service
NHS Foundation Trust

NHS111 Recruitment

- Recruitment plan in place since the summer to cover the in hours demand and staffing of the National Clinical Assessment Service
- Recruited and trained over 40 staff on short term contracts
- Review of the current demand, plus an additional 20% increase for 111 First
- An increase of 70 WTE but in real terms well over 120 staff on full and part time contracts
- Training and coaching is 6 weeks
- Since September a robust recruitment plan in place
- Training capacity doubled across our three locations by planning course during the day and evenings

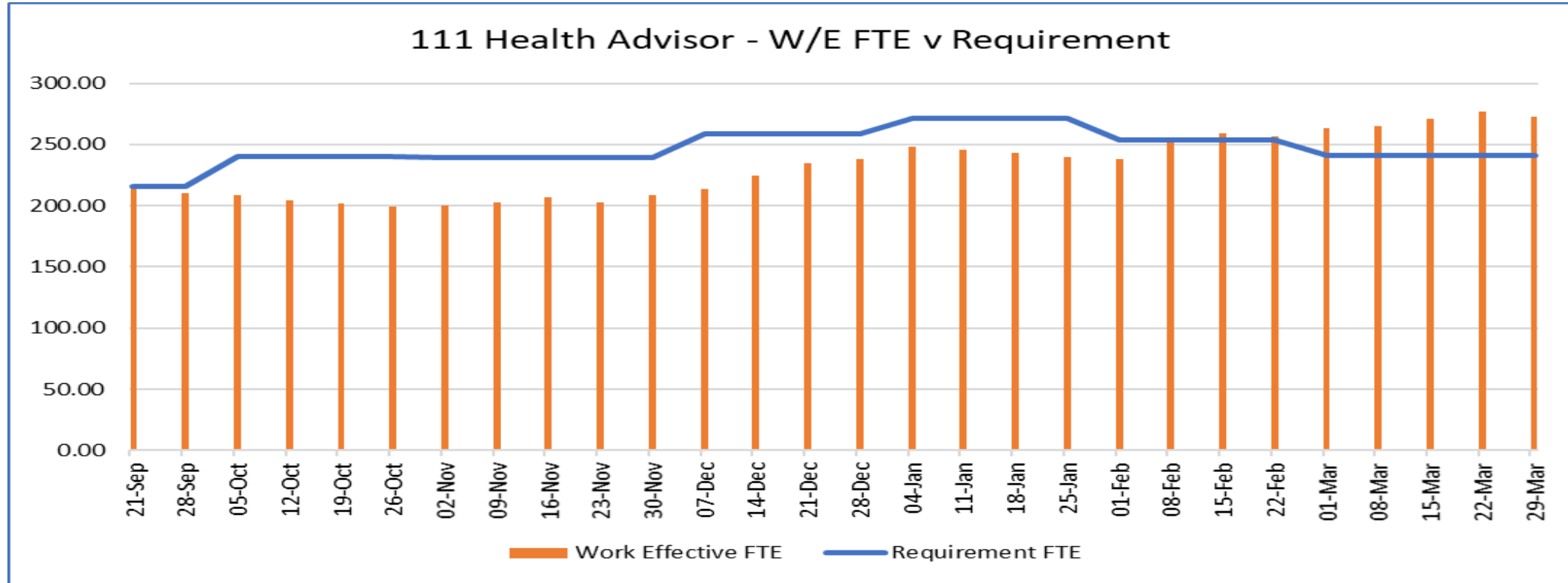


NHS

South Central
Ambulance Service
NHS Foundation Trust

2020-21 Current 111 Non-Clinical Workforce

Page 5





NHS

South Central
Ambulance Service
NHS Foundation Trust

NHS111 current Performance and Challenges

- Same challenges as describe above
- Due to second wave we have seen the demand in hours remain high and starting to increase into the out of hours period
- Our staff absence continues to rise (Covid related)
- North 111 call centre pressures due to high absence rates
- 111 National Contingency support in Nov and Dec
- Recovery Plan in place for 111 (call length and not ready)
- Recruitment plan on track (101 new recruits from Oct to Dec)

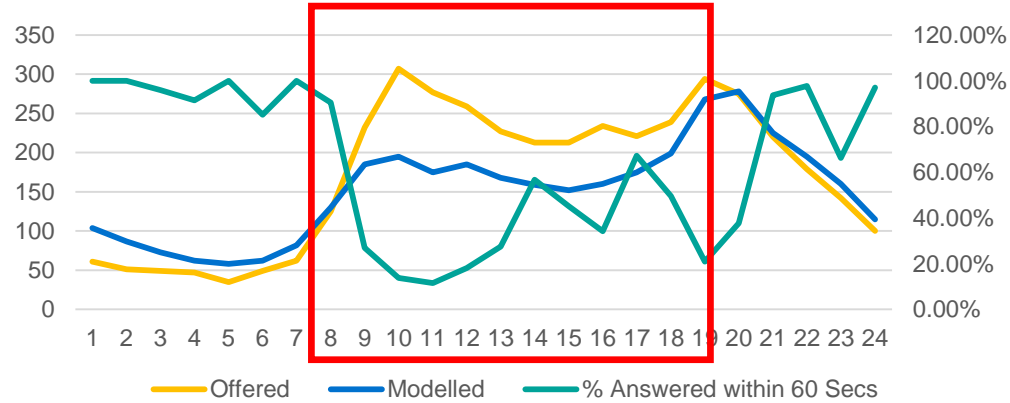


NHS

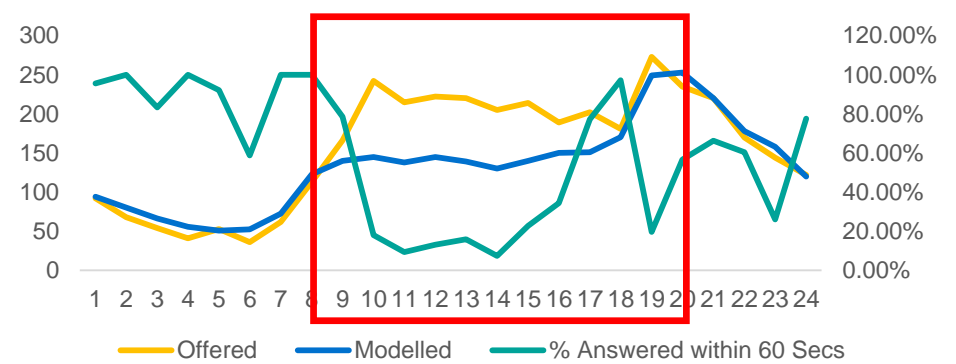
**South Central
Ambulance Service**
NHS Foundation Trust

Page 7

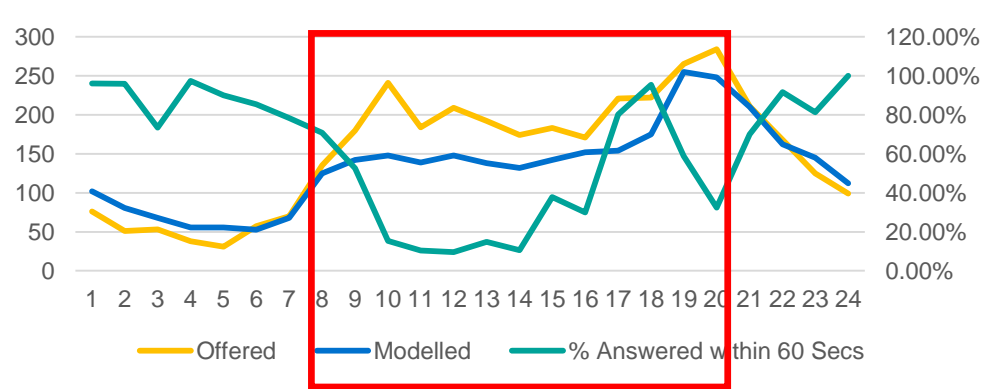
14/12/2020



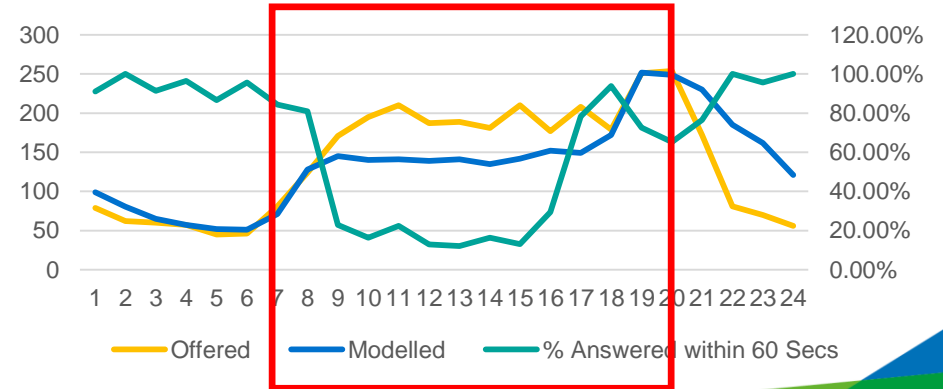
16/12/2020



15/12/2020



17/12/2020



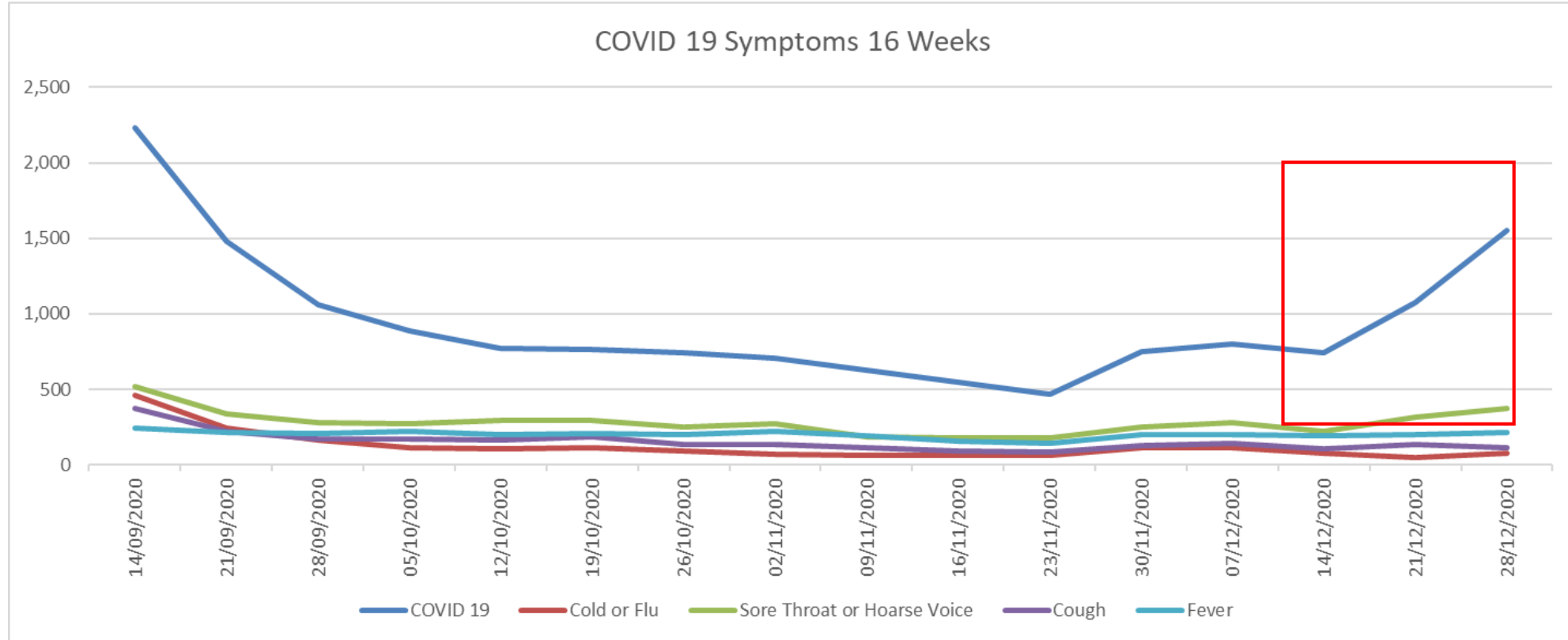


NHS

South Central
Ambulance Service
NHS Foundation Trust

COVID 19 Symptoms Last 16 Weeks

Page 8

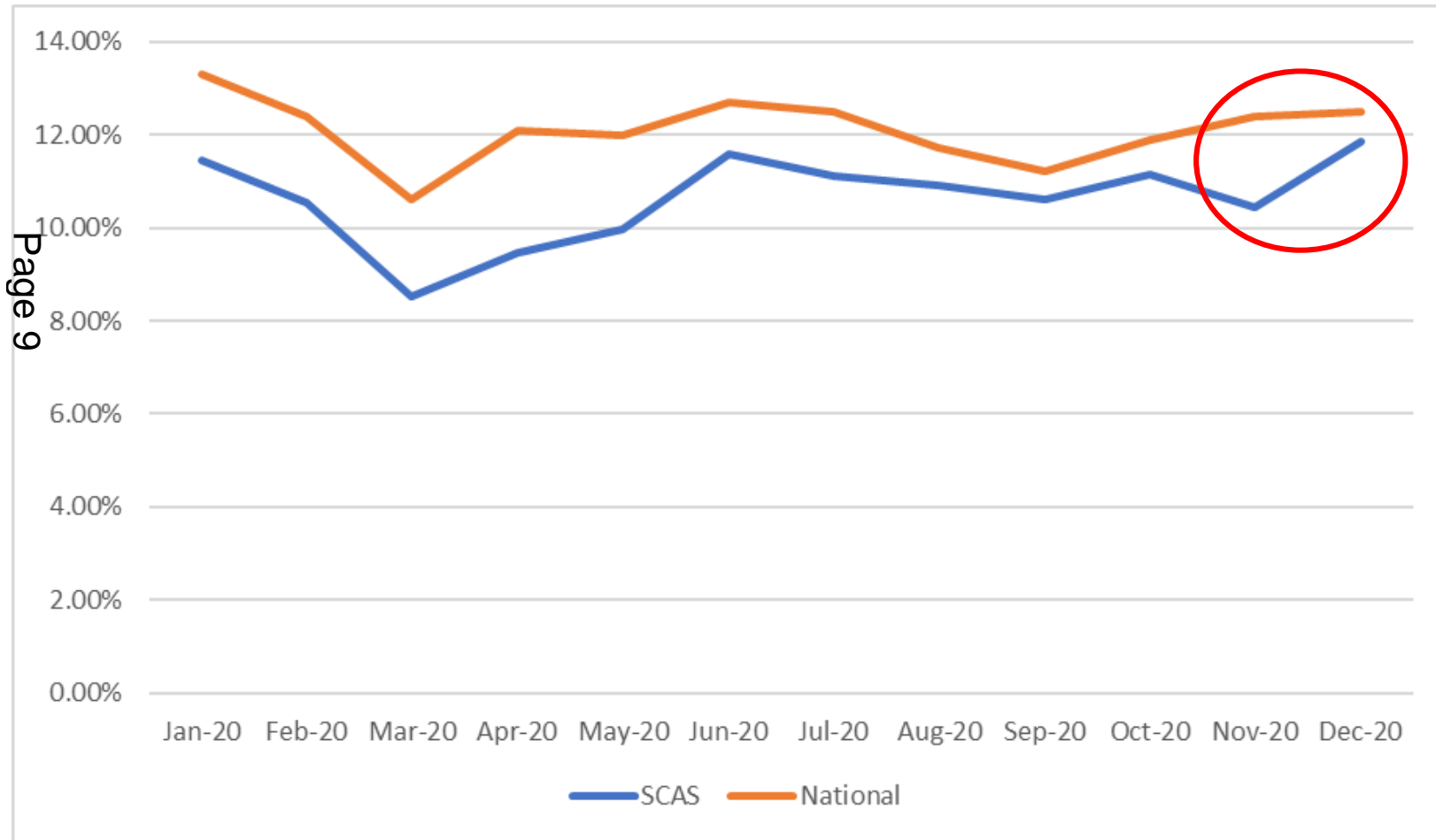




NHS

**South Central
Ambulance Service**
NHS Foundation Trust

111 - 999 (SCAS Contracts)



N.B

- Data for March is 1st – 11th

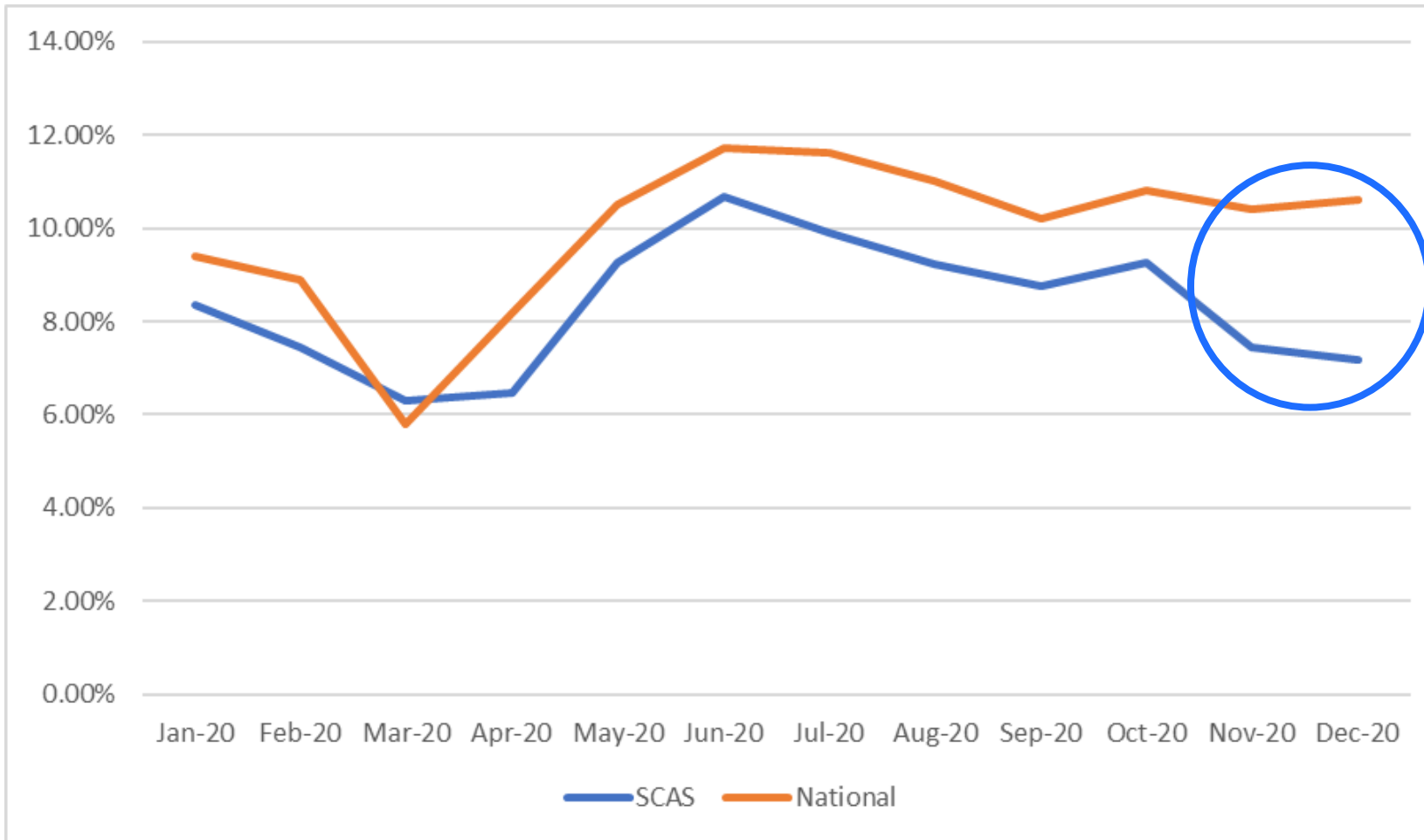


NHS

**South Central
Ambulance Service**
NHS Foundation Trust

111 - ED (SCAS Contracts)

Page 10



N.B

- Data for March is 1st – 11th



NHS

**South Central
Ambulance Service**
NHS Foundation Trust

Thank you

This page is intentionally left blank